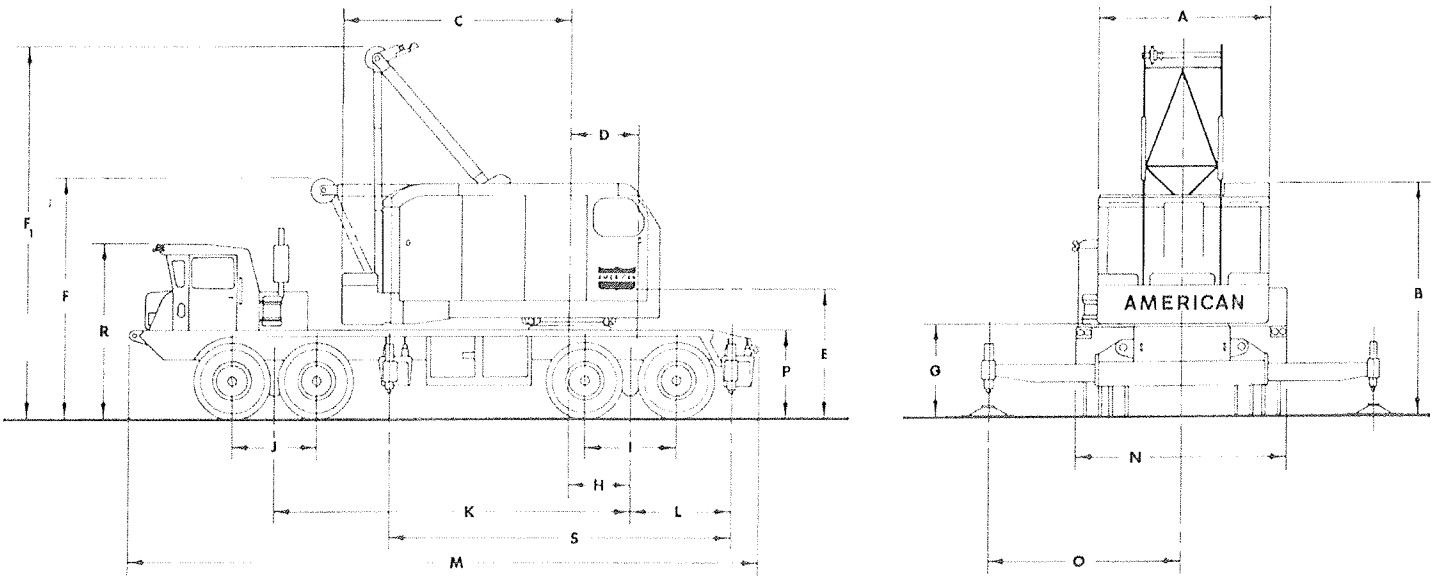


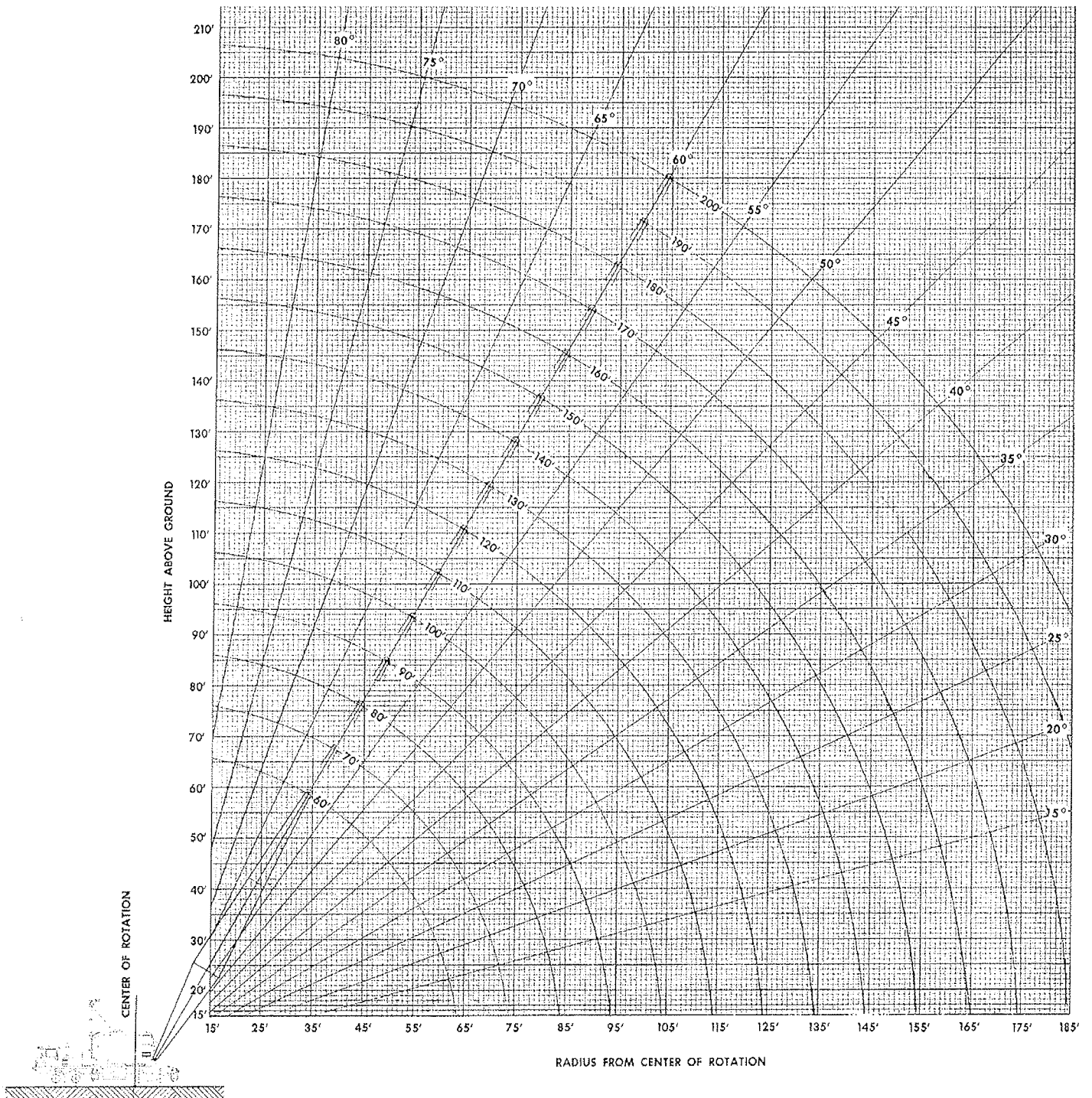
7460 CARRIER SPECIFICATIONS



GENERAL DIMENSIONS

- | | | | | | |
|-----|--|---------|----|---|--------------------|
| A. | Width of cab | 10' 6" | K. | Centerline of rear bogie to centerline of front bogie | 18' 9" |
| B. | Height to top of cab | 12' 9" | L. | Centerline of rear bogie to centerline of rear outrigger | 5' 8½" |
| C. | Tail Swing | 14' 5½" | M. | Overall length | 32' 10 1/2" 4 1/2" |
| C¹. | Tail Swing with A-Frame retracted | 16' 9½" | N. | Overall width | 11' 0" |
| D. | Centerline of rotation to centerline of boom foot | 4' 1½" | O. | Outriggers extended | 10' 0" |
| E. | Ground to centerline boom foot | 6' 6" | P. | Height over mounting plate | 4' 5½" |
| F. | Height over A-Frame (lowered) | 13' 1½" | R. | Height over carrier cab | 9' 0" |
| F¹. | Height over A-Frame (raised) | 21' 6" | S. | Centerline of rear outrigger to centerline of front outrigger | 18' 8½" |
| | Ground to bottom of counterweight | 4' 11½" | | Turning radius | 56' 0" |
| H. | Centerline of rotation to centerline of rear bogie | 3' 10" | | Clearance (under rear equalizing beam) | 10¾" |
| I. | Distance between rear axles | 4' 10" | | Clearance (under rear differential) | 12½" |
| J. | Distance between front axles | 4' 6" | T. | Distance from Front Bogie to Front Bumper | 8' 1" |

BOOM ANGLE DIAGRAM



AMERICAN MODEL 7460 TRUCK CRANE WORKING RANGES

AMERICAN[®]



**700 SERIES
MODEL 7460
TRUCK CRANE**

LIFT RATINGS

With 59S Tubular Chord Hammerhead Boom and "L-L" Counterweight (24,800 Lbs.)

Boom Lgth	Radius In Feet	Boom Angle Degrees	Free Over Side	Free Over Rear	Outriggers Set		Foot From Boom Point	Min. Load Line
					Over Side	Over Rear		
40 feet	11	82.8	--	103180	180000	180000	47	8
	12	81.3	--	99190	180000	180000	47	8
	15	77.0	--	83370	180000	180000	46	8
	20	69.6	39970	56530	137290	137290	45	6
	25	61.7	32380	42340	91840	95080	42	4
	30	53.1	26990	33560	67980	71160	39	3
	35	43.3	22960	27570	53630	56540	35	3
40	30.9	19540	23200	44040	46660	27	2	
50 feet	13	81.9	--	95160	180000	180000	57	8
	15	79.6	--	83460	180000	180000	56	8
	20	73.8	39820	56570	137290	137290	55	6
	25	67.7	32250	42370	92070	95280	54	4
	30	61.3	26880	33580	68140	71300	51	3
	35	54.5	22870	27590	53770	56660	48	3
	40	47.0	19580	23240	44170	46790	44	2
50	27.4	14420	17320	32120	34270	30	2	
60 feet	14	82.3		91360	180000	180000	67	8
	15	81.3	51070	83460	180000	180000	67	8
	20	76.5	39600	56540	137210	137210	66	6
	25	71.6	32050	42320	92190	95380	64	4
	30	66.5	26700	33520	68210	71360	62	3
	35	61.1	22700	27530	53810	56700	60	3
	40	55.5	19530	23190	44200	46810	57	2
	50	42.6	14400	17300	32150	34300	48	2
60	24.8	11050	13450	24870	26690	32	2	
70 feet	15	82.6	50800	83420	180000	180000	77	8
	20	78.5	39350	56460	137080	137080	76	6
	25	74.3	31810	42230	92250	95420	75	4
	30	70.0	26470	33420	68230	71360	73	3
	35	65.6	22490	27430	53800	56670	71	3
	40	61.0	19400	23090	44170	46770	68	2
	50	51.0	14300	17200	32120	34260	62	2
	60	39.3	10980	13380	24850	26660	51	2
70	22.9	8630	10680	19960	21520	34	1	
80 feet	16	82.8	47840	76220	160300	160300	87	7
	20	79.9	39140	56400	136980	136980	86	6
	25	76.3	31610	42150	92300	95450	85	4
	30	72.6	26280	33330	68230	71350	84	3
	35	68.8	22300	27340	53780	56640	82	3
	40	64.9	19220	22990	44140	46730	80	2
	50	56.6	14210	17110	32070	34210	74	2
	60	47.5	10900	13300	24800	26610	66	2
	70	36.6	8570	10620	19940	21490	55	1
80	21.3	6830	8610	16420	17790	36	1	
90 feet	17	83.0	45070	70050	145850	145850	97	6
	20	81.0	38860	56290	136810	136810	96	6
	25	77.8	31340	42020	92320	95450	95	4
	30	74.5	26020	33190	68200	71300	94	3
	35	71.2	22050	27190	53720	56570	92	3
	40	67.8	18970	22840	44060	46640	91	2
	50	60.7	14070	16960	31970	34100	86	2
	60	53.1	10760	13160	24700	26500	79	2

Boom Lgth	Radius In Feet	Boom Angle Degrees	Free Over Side	Free Over Rear	Outriggers Set		Foot From Boom Point	Min. Load Line
					Over Side	Over Rear		
90 feet cont.	70	44.6	8440	10490	19830	21390	70	1
	80	34.4	6710	8500	16340	17700	58	1
	90	20.0	5360	6940	13690	14900	38	1
100 feet	19	82.5	40460	60150	126840	126840	106	5
	20	81.9	38570	56170	126100	126100	106	5
	25	79.0	31060	41870	92310	95430	105	4
	30	76.1	25740	33040	68150	71240	104	3
	35	73.2	21780	27030	53640	56480	103	3
	40	70.1	18710	22680	43960	46540	101	2
	50	63.9	13910	16800	31850	33980	97	2
	60	57.3	10600	13000	24570	26370	91	2
	70	50.2	8280	10330	19710	21260	84	1
	80	42.1	6560	8350	16220	17580	74	1
90	32.5	5230	6810	13580	14790	61	1	
100	18.9	4150	5570	11500	12600	39	1	
110 feet	20	82.7	38270	56040	114480	114480	116	5
	25	80.0	30770	41730	92300	95390	116	4
	30	77.4	25460	32880	68090	71160	115	3
	35	74.7	21500	26870	53550	56380	113	3
	40	72.0	18430	22510	43860	46420	112	2
	50	66.4	13730	16620	31730	33850	108	2
	60	60.6	10430	12820	24440	26230	103	2
	70	54.4	8110	10160	19560	21110	97	1
	80	47.7	6400	8180	16070	17430	88	1
	90	40.1	5070	6650	13440	14650	78	1
	100	31.0	4010	5430	11380	12370	64	1
110	18.0	3120	4410	9710	10700	41	1	
120 feet	21	82.8	36290	52390	99590	99590	126	4
	25	80.9	30530	41600	92290	95360	126	4
	30	78.5	25220	32740	68030	71090	125	3
	35	76.0	21260	26720	53470	56290	124	3
	40	73.5	18200	22360	43760	46320	122	2
	50	68.5	13580	16470	31610	33720	119	2
	60	63.3	10270	12660	24310	26100	114	2
	70	57.8	7960	10000	19430	20970	109	1
	80	51.9	6240	8030	15940	17290	102	1
	90	45.5	4920	6500	13310	14520	93	1
	100	38.3	3870	5290	11250	12340	81	1
	110	29.6	3000	4290	9600	10590	66	1
120	17.2	2260	3440	8220	9130	42	1	
130 feet	22	82.9	34380	49110	86010	86010	136	4
	25	81.6	30230	41440	86010	86010	136	4
	30	79.4	24930	32570	67960	71010	135	3
	35	77.1	20980	26550	53370	56180	134	3
	40	74.8	17920	22180	43640	46190	133	2
	50	70.2	13400	16280	31470	33580	130	2
	60	65.5	10080	12480	24160	25940	126	2
	70	60.5	7770	9810	19270	20810	120	1
	80	55.3	6060	7840	15780	17130	114	1
	90	49.7	4740	6320	13150	14350	106	1
	100	43.6	3690	5110	11090	12180	97	1
	110	36.7	2820	4110	9440	10430	85	1
	120	28.4	2100	3280	8080	8990	69	1
130	16.5	1470	2560	6920	7760	44	1	

(Continued)

LIFT RATINGS (cont.)

With 59S Tubular Hammerhead Boom

Boom Lgth	Radius In Feet	Boom Angle Degrees	Free Over Side	Free Over Rear	Outriggers Set		Foot From Boom Foot	Min. Load Lino
					Over Side	Over Rear		
140 feet	24	82.6	--	--	73010	73010	146	3
	25	82.2	--	--	73010	73010	146	3
	30	80.1	--	--	67890	70930	145	3
	35	78.0	--	--	53270	56070	144	3
	40	75.9	--	--	43520	46060	143	2
	50	71.7	--	--	31320	33430	140	2
	60	67.3	--	--	24000	25780	136	2
	70	62.8	--	--	19110	20650	132	1
	80	58.1	--	--	15610	16960	126	1
	90	53.1	--	--	12980	14180	119	1
	100	47.8	--	--	10920	12010	111	1
	110	41.9	--	--	9270	10260	101	1
	120	35.3	--	--	7920	8820	88	1
	130	27.3	--	--	6780	7610	71	1
140	15.9	--	--	5790	6570	45	1	

Boom Lgth	Radius In Feet	Boom Angle Degrees	Free Over Side	Free Over Rear	Outriggers Set		Foot From Boom Point	Min. Load Lino
					Over Side	Over Rear		
150 feet	25	82.7	--	--	62370	62370	156	3
	30	80.8	--	--	62370	62370	155	3
	35	78.8	--	--	53020	55820	154	3
	40	76.9	--	--	43270	45810	153	2
	50	72.9	--	--	31090	33190	151	2
	60	68.9	--	--	23770	25550	147	1
	70	64.8	--	--	18880	20420	143	1
	80	60.4	--	--	15390	16740	138	1
	90	55.9	--	--	12760	13960	131	1
	100	51.2	--	--	10710	11800	124	1
	110	46.1	--	--	9070	10050	115	1
	120	40.4	--	--	7720	8620	104	1
	130	34.1	--	--	6590	7420	91	1
	140	26.3	--	--	5620	6390	73	1
	150	15.3	--	--	4780	5500	46	1

7460.03

LIFT RATINGS

With 59S Tubular Tapered Tip Boom and "L-L" Counterweight (24,800 lbs.)

Boom Lgth	Radius In Feet	Boom Angle Degrees	Free Over Side	Free Over Rear	Outriggers Set		Foot From Boom Point	Min. Load Lino
					Over Side	Over Rear		
60 feet	14	80.5	---	91910	153940	153940	66	6
	15	79.6	---	83470	153940	153940	66	6
	20	74.7	40110	56800	137570	137570	64	6
	25	69.6	32650	42720	92450	95660	63	4
	30	64.5	27360	34010	68630	71780	61	3
	35	59.0	23420	28090	54320	57210	58	3
	40	53.3	20140	23790	44780	47390	55	2
70 feet	50	40.1	15080	17980	32830	34980	45	2
	60	21.4	11810	14210	25630	27450	28	2
	16	80.2	48430	76280	153940	153940	76	6
	20	76.9	39820	56680	137390	137390	75	6
	25	72.6	32380	42590	92460	95650	73	4
	30	68.3	27100	33870	68600	71730	72	3
	35	63.8	23170	27950	54270	57140	69	3
80 feet	40	59.2	20000	23660	44710	47310	67	2
	50	49.1	14950	17850	32740	34890	59	2
	60	37.0	11680	14090	25540	27350	49	2
	70	19.8	9390	11440	20720	22280	30	1
	17	80.7	45650	70130	153940	153940	86	6
	20	78.6	39520	56540	137190	137190	85	6
	25	74.9	32090	42430	92440	95610	84	4
90 feet	30	71.1	26820	33720	68530	71660	82	3
	35	67.3	22900	27790	54180	57050	80	3
	40	63.4	19840	23490	44610	47200	78	2
	50	55.0	14790	17680	32630	34770	72	2
	60	45.7	11530	13930	25420	27230	64	2
	70	34.6	9240	11290	20610	22160	52	1
	80	18.5	7540	9330	17140	18510	32	1
90 feet	19	80.5	41060	60310	144060	144060	95	6
	20	79.8	39200	56380	136970	136970	95	6
	25	76.6	31780	42260	92390	95550	94	4
	30	73.3	26530	33540	68450	71560	93	3
	35	69.9	22610	27610	54080	56930	91	3
	40	66.5	19580	23310	44490	47080	89	2
	50	59.4	14610	17500	32490	34630	84	2
	60	51.6	11350	13750	25280	27090	77	2
	70	43.0	9070	11120	20460	22020	68	1
	80	32.5	7380	9170	17010	18370	55	1
90	17.4	6070	7650	14400	15610	34	1	

Boom Lgth	Radius In Feet	Boom Angle Degrees	Free Over Side	Free Over Rear	Outriggers Set		Foot From Boom Point	Min. Load Lino
					Over Side	Over Rear		
100 feet	20	80.9	38930	56240	126240	126240	105	5
	25	78.0	31520	42120	92350	95490	104	4
	30	75.0	26270	33390	68370	71480	103	3
	35	72.0	22370	27450	53980	56830	102	3
	40	69.0	19340	23160	44380	46960	100	2
	50	62.7	14450	17350	32370	34500	95	2
	60	56.0	11200	13600	25160	26950	90	2
	70	48.8	8920	10970	20340	21890	82	1
	80	40.6	7240	9020	16880	18240	72	1
	90	30.8	5940	7520	14280	15490	58	1
	100	16.5	4890	6310	12240	13330	35	1
110 feet	22	80.6	35300	49480	114290	114290	115	5
	25	79.1	31200	41930	92290	95410	115	4
	30	76.4	25970	33200	68270	71370	113	3
	35	73.7	22060	27260	53860	56700	112	3
	40	71.0	19040	22960	44250	46820	111	2
	50	65.4	14260	17150	32220	34350	107	2
	60	59.5	11010	13400	25000	26790	101	2
	70	53.2	8730	10780	20170	21720	95	1
	80	46.4	7050	8830	16720	18080	86	1
	90	38.7	5750	7330	14120	15330	75	1
	100	29.4	4720	6140	12090	13180	61	1
120 feet	23	81.0	33500	46520	99910	99910	125	4
	25	80.0	30880	41740	92220	95330	125	4
	30	77.5	25650	33000	68170	71250	124	3
	35	75.1	21760	27060	53730	56560	123	3
	40	72.6	18740	22760	44100	46670	121	2
	50	67.5	14060	16950	32060	34180	117	2
	60	62.2	10810	13200	24830	26620	113	2
	70	56.7	8530	10580	20000	21540	107	1
	80	50.8	6850	8630	16540	17900	100	1
	90	44.3	5560	7140	13940	15150	90	1
	100	37.0	4530	5940	11910	13000	79	1
130 feet	110	28.1	3680	4970	10280	11270	63	1
	120	15.1	2970	4150	8940	9840	38	1
	25	80.8	30550	41550	87460	87460	135	4
	30	78.5	25330	32810	68060	71130	134	3
	35	76.3	21440	26860	53600	56420	133	3

LIFT RATINGS (cont.)

With 59S Tubular Tapered Tip Boom

Boom Lgth	Radius In Feet	Boom Angle Degrees	Froo Over Side	Froo Over Rear	Outriggers Set		Foot From Boom Point	Min. Load Line
					Over Side	Over Rear		
130 feet Cont.	40	74.0	18430	22560	43960	46520	132	2
	50	69.3	13860	16740	31900	34010	128	2
	60	64.5	10600	12990	24660	26440	124	2
	70	59.6	8330	10370	19820	21360	119	1
	80	54.3	6650	8430	16360	17710	112	1
	90	48.7	5350	6930	13760	14970	104	1
	100	42.5	4330	5740	11730	12820	94	1
	110	35.5	3490	4770	10100	11090	82	1
	120	27.0	2780	3960	8760	9670	68	1
	130	14.5	2180	3270	7630	8470	39	1
140 feet	27	80.6	--	--	73970	73970	145	3
	30	79.3	--	--	67950	71010	144	3
	35	77.3	--	--	53470	56290	143	3
	40	75.2	--	--	43820	46370	142	2
	50	70.9	--	--	31740	33860	139	2
	60	66.5	--	--	24490	26280	135	2
	70	61.9	--	--	19650	21190	130	1
	80	57.2	--	--	16190	17540	124	1
	90	52.2	--	--	13590	14790	117	1
	100	46.8	--	--	11560	12650	109	1
	110	40.9	--	--	9930	10920	98	1
	120	34.1	--	--	8600	9500	85	1
	130	26.0	--	--	7480	8310	68	1
	140	13.9	--	--	5620	7290	40	1
150 feet	28	80.8	--	--	64320	64320	155	3
	30	80.1	--	--	64120	64120	154	3
	35	78.1	--	--	53340	56140	153	3
	40	76.2	--	--	43670	46210	152	2
	50	72.2	--	--	31580	33680	149	2
	60	68.1	--	--	24320	26100	146	2
	70	63.9	--	--	19470	21010	141	1
	80	59.6	--	--	16000	17350	136	1
	90	55.1	--	--	13400	14600	130	1
	100	50.3	--	--	11370	12450	122	1
	110	45.1	--	--	9740	10730	113	1
	120	39.4	--	--	8410	9310	102	1
	130	32.9	--	--	7290	8120	88	1
	140	25.1	--	--	6340	7110	70	1
150	13.5	--	--	5510	6240	42	1	
160 feet	30	80.7	--	--	56180	56180	164	3
	35	78.9	--	--	53200	56000	164	3
	40	77.0	--	--	43510	46060	163	2
	50	73.3	--	--	31410	33510	160	2
	60	69.6	--	--	24140	25910	157	2
	70	65.7	--	--	19280	20820	152	1
	80	61.7	--	--	15810	17160	147	1
	90	57.5	--	--	13210	14410	142	1
	100	53.2	--	--	11180	12260	135	1
	110	48.6	--	--	9550	10530	127	1
	120	43.6	--	--	8210	9110	117	1
	130	38.1	--	--	7100	7930	105	1
	140	31.9	--	--	6150	6920	91	1
	150	24.3	--	--	5330	6050	72	1
	160	13.0	--	--	4610	5290	43	1
	170 feet	31	80.9	--	--	47980	47980	174
35		79.5	--	--	47570	47570	174	2
40		77.8	--	--	43360	45890	173	2
50		74.3	--	--	31230	33330	170	2
60		70.8	--	--	23950	25720	167	2
70		67.2	--	--	19090	20620	163	1
80		63.5	--	--	15620	16960	159	1

Boom Lgth	Radius In Feet	Boom Angle Degrees	Froo Over Side	Froo Over Rear	Outriggers Set		Foot From Boom Point	Min. Load Line
					Over Side	Over Rear		
170 feet Cont.	90	59.7	--	--	13010	14210	153	1
	100	55.7	--	--	10980	12060	147	1
	110	51.5	--	--	9350	10330	140	1
	120	47.0	--	--	8010	8910	131	1
	130	42.2	--	--	6900	7730	121	1
	140	36.9	--	--	5950	6720	109	1
	150	30.9	--	--	5130	5850	94	1
	160	23.5	--	--	4420	5100	74	1
	170	12.6	--	--	3790	4420	44	1
	180 feet	33	80.8	--	--	42420	42420	184
35		80.1	--	--	42270	42270	184	2
40		78.5	--	--	41790	41790	183	2
50		75.2	--	--	31070	33160	181	2
60		71.9	--	--	23780	25550	178	1
70		68.5	--	--	18910	20440	174	1
80		65.1	--	--	15440	16780	170	1
90		61.5	--	--	12830	14020	165	1
100		57.8	--	--	10790	11870	159	1
110		54.0	--	--	9160	10140	152	1
120		49.9	--	--	7820	8720	144	1
130		45.6	--	--	6710	7540	135	1
140		41.0	--	--	5760	6530	125	1
150		35.9	--	--	4950	5670	112	1
160		30.0	--	--	4240	4910	97	1
170		22.8	--	--	3610	4250	76	1
180		12.3	--	--	3050	3650	45	1
190 feet		34	81.0	--	--	37710	37710	194
	35	80.6	--	--	37580	37580	194	2
	40	79.1	--	--	37110	37110	193	2
	50	76.0	--	--	30890	32980	191	2
	60	72.9	--	--	23590	25360	188	1
	70	69.7	--	--	18720	20250	185	1
	80	66.5	--	--	15240	16580	181	1
	90	63.1	--	--	12630	13820	176	1
	100	59.7	--	--	10590	11670	171	1
	110	56.1	--	--	8960	9940	164	1
	120	52.4	--	--	7620	8520	157	1
	130	48.5	--	--	6510	7340	149	1
	140	44.3	--	--	5560	6330	139	1
	150	39.8	--	--	4740	5460	128	1
160	34.9	--	--	4030	4710	115	1	
170	29.2	--	--	3410	4050	99	1	
180	22.2	--	--	2860	3460	78	1	
190	12.0	--	--	2360	2920	46	1	
200 feet	36	80.8	--	--	33650	33650	204	2
	40	79.7	--	--	33270	33270	203	2
	50	76.7	--	--	30720	32140	201	2
	60	73.8	--	--	23410	25170	199	1
	70	70.8	--	--	18530	20050	195	1
	80	67.7	--	--	15050	16380	192	1
	90	64.6	--	--	12430	13620	187	1
	100	61.4	--	--	10390	11460	182	1
	110	58.0	--	--	8760	9730	176	1
	120	54.6	--	--	7420	8310	170	1
	130	51.0	--	--	6300	7130	162	1
	140	47.2	--	--	5350	6120	153	1
	150	43.2	--	--	4540	5260	143	1
	160	38.8	--	--	3830	4500	132	1
	170	34.0	--	--	3210	3840	118	1
	180	28.4	--	--	2660	3250	102	1
190	21.7	--	--	2160	2730	80	1	
200	11.7	--	--	1710	2250	47	1	

CRANE RATING DATA

Load ratings are in pounds and do not exceed 85% of the load which would cause tipping with crane standing level on firm uniformly supporting surface. Safe loads depend on ground conditions, boom length, radius of operation, and proper handling, all of which must be taken into consideration by user.

Tire inflation pressure for "Free Ratings" is 100 P.S.I. Free ratings do not exceed maximum permissible tire load. Tire pressure shall be reduced for over-the-road travel.

Approved working areas "Free Over Side" and "Free Over Rear" are shown under Diagram No. 1. Approved working areas "Outriggers Extended and Set Over Side or Rear" are shown under Diagram No. 2.

"Radius in feet" is the horizontal distance at crane base level from center pin to a vertical line through the center of gravity of the suspended load.

Lifting is approved only in those areas for which ratings are shown in the rating chart. Blocks, slings, buckets, and other load carrying devices are considered part of the load. Retractable A-frame must be in fully raised position for all ratings. Ratings in shaded areas are limited by strength of material or factors other than stability.

Main load line is 1 inch diameter with a minimum breaking strength of 89,800 pounds. Boom suspension line is 3/4 inch diameter with a minimum breaking strength of 58,800 pounds. Boom suspension pendants are 1-3/8 inch diameter with a minimum breaking strength of 208,000 pounds.

Boom and jib erection is over the rear of the machine with outriggers extended and set and with "Lift Rating" counterweight. A-frame must be fully raised and blocks, slings and other load carrying devices must be on the ground.

Compliance to B30.5 based on AMERICAN® carrier mounting.

Designed and rated to comply with ANSI Code B30.5.

BOOM AND JIB ERECTION

59H Tubular Boom	Maximum Jib Length	
	No. 9HL	No. 9
200' Tapered Tip	50'	30'
190' Tapered Tip	60'	50'
150' Hammerhead	60'	50'

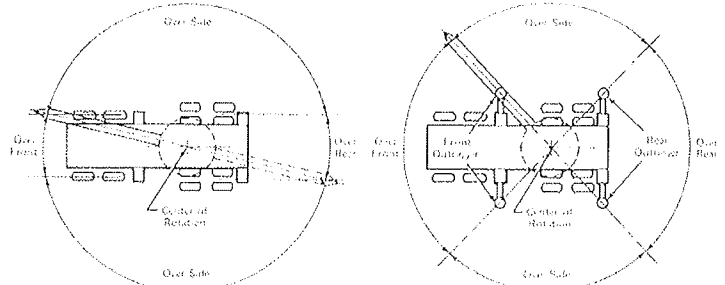


DIAGRAM NO. 1
FREE RATINGS

DIAGRAM NO. 2
OUTRIGGERS EXTENDED AND SET

LOAD HOISTING DATA*

Maximum Lifting Capacity in Pounds	Minimum Parts of Load Line	Maximum Hoisting Distance		
		RH Drum with Controlled Load Lowering	LH Drum with Controlled Load Lowering	LH Drum without Controlled Load Lowering
180,000	8	72'	45'	55'
179,600	7	83'	52'	63'
153,940	6	96'	60'	73'
128,280	5	116'	72'	88'
102,630	4	145'	91'	110'
76,970	3	193'	121'	147'
51,310	2	290'	182'	221'
25,660	1	581'	364'	442'

*Based on 1" IPS Rope.

BOOM COMPOSITION

59S TAPERED TIP BOOM

59S HAMMERHEAD BOOM

Boom Length in Feet	20 Ft. 59SH Inner	10 Ft. 59S Center	20 Ft. 59S Center	40 Ft. 59S Center	20 Ft. 59SH Outer Base	Hammerhead
40	1	-	-	-	1	1
50	1	-	-	-	1	1
60	1	-	1	-	1	1
70	1	1	1	-	1	1
80	1	-	-	1	1	1
90	1	1	-	1	1	1
100	1	-	1	1	1	1
110	1	1	1	1	1	1
120	1	-	-	2	1	1
130	1	1	-	2	1	1
140	1	-	1	2	1	1
150	1	1	1	2	1	1

Boom Length in Feet	20 Ft. 59SH Inner	10 Ft. 59S Center	20 Ft. 59S Center	40 Ft. 59S Center	20 Ft. 59SH Outer Base	20 Ft. 59SH Tapered Tip
60	1	-	-	-	1	1
70	1	1	-	-	1	1
80	1	-	1	-	1	1
90	1	1	1	-	1	1
100	1	-	-	1	1	1
110	1	1	-	1	1	1
120	1	-	1	1	1	1
130	1	1	1	1	1	1
140	1	-	-	2	1	1
150	1	1	-	2	1	1
160	1	-	1	2	1	1
170	1	1	1	2	1	1
180	1	-	-	3	1	1
190	1	1	-	3	1	1
200	1	-	1	3	1	1